



The Place for Ideas

# OVERTIME EVO

Design by Luxy R&D

Geometrica semplicità per una linea senza spazio e senza tempo. Overtime Evo è la seduta dal carattere spensierato ed energetico da utilizzare in qualsiasi ambiente di lavoro per la sua vivacità. Ergonomia e design moderno la rendono un prodotto completo in termini di estetica ed evoluzione meccanica. Dinamismo tra stabilità e movimento per l'utilizzatore nello spazio lavorativo. Al passo con la freneticità del mondo contemporaneo.

Geometric simplicity beyond space and time. Overtime Evo exudes a carefree and energetic vibe, perfect for livening up workspaces. With a contemporary ergonomic design, the chair is highly evolved, both in aesthetics and mechanics. Dynamic yet stable, the chair responds to the daily needs of the high-paced contemporary workplace without skipping a beat.







**OVERTIME EVO**

Modelli 5700 e 5710R / 5700 and 5710R models



1.



2.



3.



4.

- 1. Dettaglio del poggiatesta del modello 2200/ 2200 model headrest detail.
- 2. Modello 2210R rete/ 2210R mesh model.
- 3. Modello 2210/ 2210 model.
- 4. Modelli 2200 e 2210/ 2200 and 2210 models.





1.

1. Regolazione di altezza con alzata a gas escursione 125 mm, sistema anti-shock/ Height adjustment with gas lift, stroke 125 mm, anti shock system.

2. Bracciolo 4D e 3D con regolazione di profondità di 50 mm/ 4D and 3D armrest with maximum depth of 50 mm.

3. Regolazione profondità sedile con traslatore a profondità 63 mm/ Seat depth adjustment with side shifter, depth 63 mm.



2.



3.





1.



2.



3.



4.

- 1. Bracciolo 4D e 3D con regolazione in altezza di 80 mm/ 4D and 3D armrest with height adjustment of 80 mm.
- 2. Bracciolo 4D con regolazione in larghezza di 40 mm/ 4D armrest with width adjustment of 40 mm.
- 3. Pad soft touch con rotazione di 360°/ Soft touch pad with 360° rotation.
- 4. Bracciolo 1D con regolazione in altezza di 75 mm/ 1D armrest has a height range of 75 mm.





1.

1. Meccanismo con movimento sincronizzato di sedile e schienale con 23° di oscillazione dello schienale e 7,7° di oscillazione sedile. Sei funzioni di blocco, sblocco e antishock/ Synchronized movement seat and backrest mechanism with 23° oscillation of the backrest and 7.7° oscillation of the seat. Six functions including locking, unlocking and anti-shock.

2. Regolazione poggiatesta di 100 mm/ Back cushion adjustment of 100 mm.

3-4 Poggiatesta con regolazione ad escursione in altezza di 30 mm ed inclinazione di 45°/ Headrest with 30 mm stroke height adjustment and 45° inclination.



2.



3.



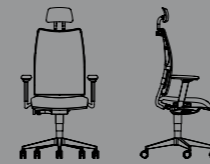
4.





**OVERTIME EVO**

Design by Luxy R&D  
Sedute Operative/ Task chairs

**Sedile imbottito e schienale in rete/ Upholstered seat and mesh backrest****2200**

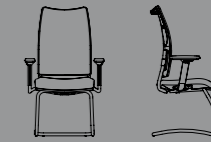
L 67 x W 67 x H 120 cm

**2210R/D**

L 67 x W 67 x H 100 cm

**2210**

L 67 x W 67 x H 100 cm

**2900R**

L 64 x W 66 x H 105 cm

**2900**

L 51 x W 66 x H 105 cm

**Sedile e schienale in rete/ Seat and backrest mesh upholstered****5700**

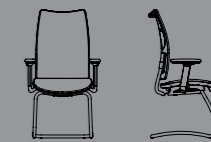
L 67 x W 67 x H 123 cm

**5710R**

L 67 x W 67 x H 101 cm

**5710**

L 67 x W 67 x H 101 cm

**5600**

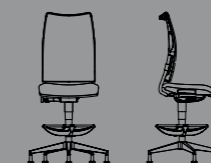
L 64 x W 66 x H 104 cm

**5600R**

L 51 x W 66 x H 104 cm

**2220R**

L 67 x W 62 x H 124 cm

**2220**

L 67 x W 62 x H 124 cm

Tutte le finiture, i tessuti, i meccanismi, le caratteristiche specifiche e gli accessori di ogni modello sono consultabili sul listino/  
All finishes, fabrics, mechanisms, specific features and accessories of each model are available on the price list.

**MATERIALI**

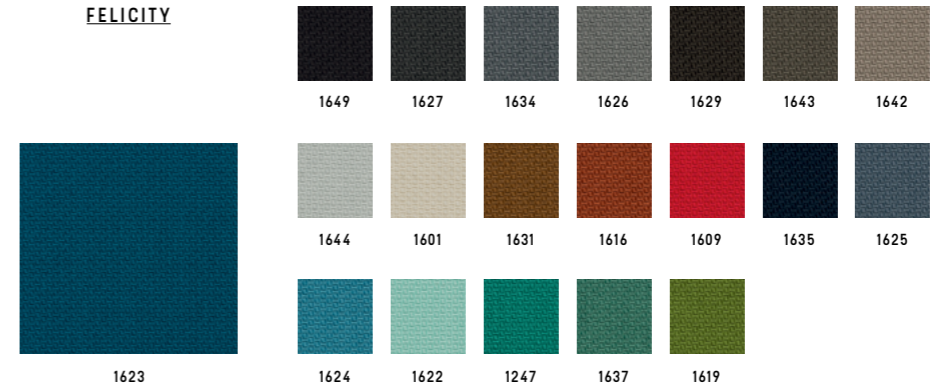
MATERIALI/ MATERIALS





**GABRIEL**

**FELICITY**

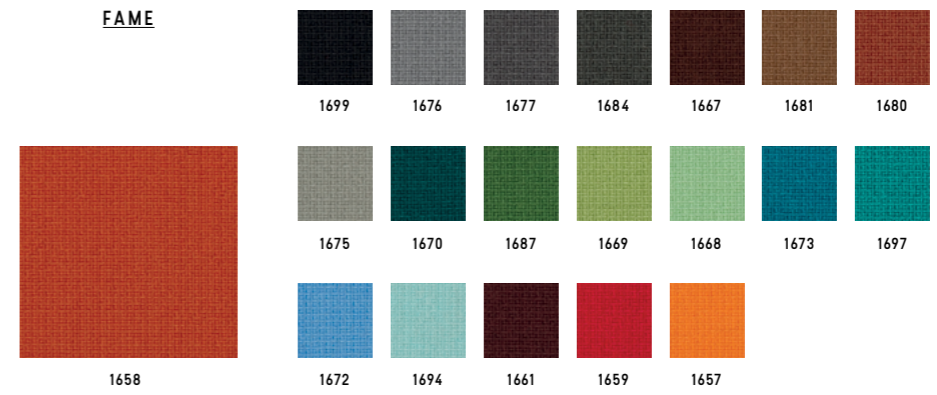


Categoria/ Category  
Composizione/ Composition  
Note/ Notes

C  
100% polyester  
100% recycled fabric



**FAME**



Categoria/ Category  
Composizione/ Composition

D  
95% New Zeland wool + 5% polyamide



**BREEZE FUSION**



Categoria/ Category  
Composizione/ Composition

K  
88% New Zeland wool + 12% polyamide





**GABRIEL**

---

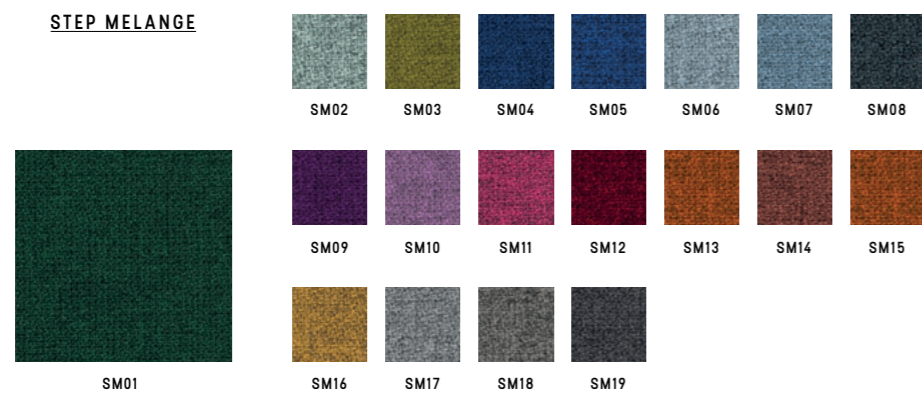
**SAVOY**



Categoria/ Category **K**  
Composizione/ Composition **100% Trevira CS**



**STEP MELANGE**



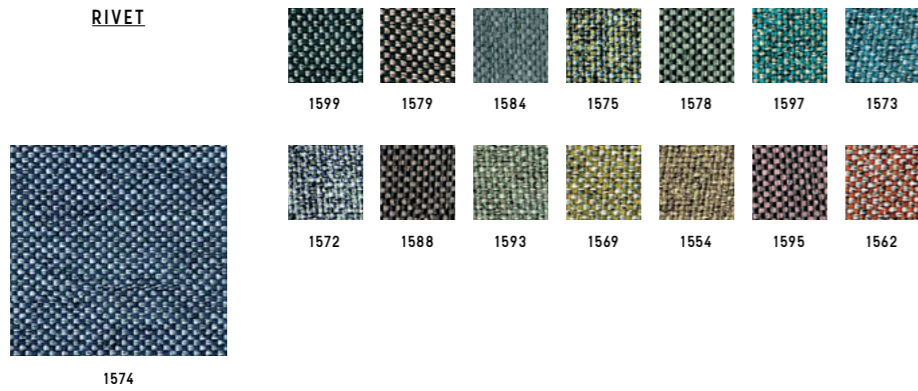
Categoria/ Category **D**  
Composizione/ Composition **100% Trevira CS**





**CAMIRA**

**RIVET**



Categoria/ Category **C**  
 Composizione/ Composition 100% reprove  
 Note/ Notes 100% recycled fabric



**KVADRAT**

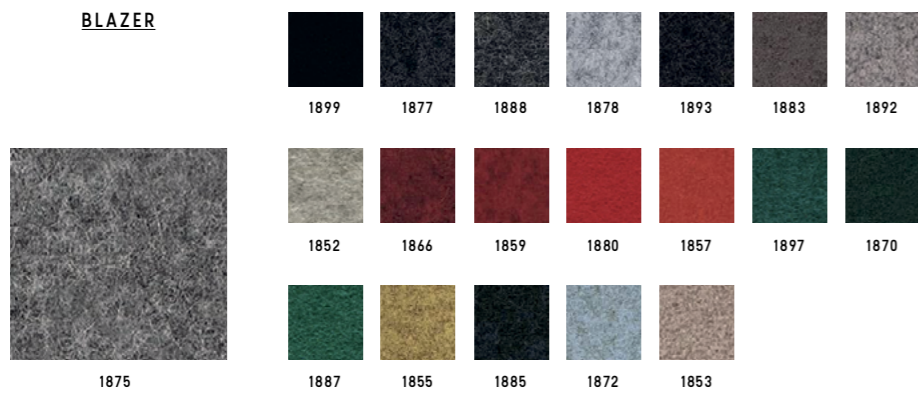
**RELATE**



Categoria/ Category **D**  
 Composizione/ Composition 100% trevira CS  
 Note/ Notes 100% recycled fabric



**BLAZER**



Categoria/ Category **K**  
 Composizione/ Composition 100% virgin wool



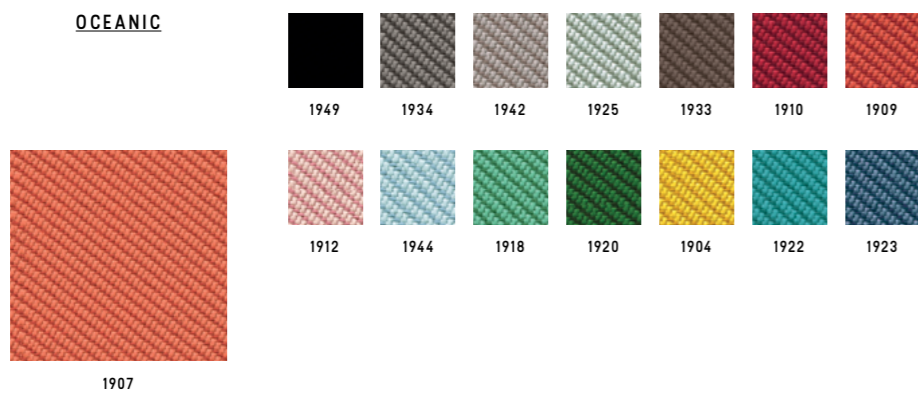
**REMIX 3**



Categoria/ Category **K**  
 Composizione/ Composition 90% new wool worsted + 10% nylon



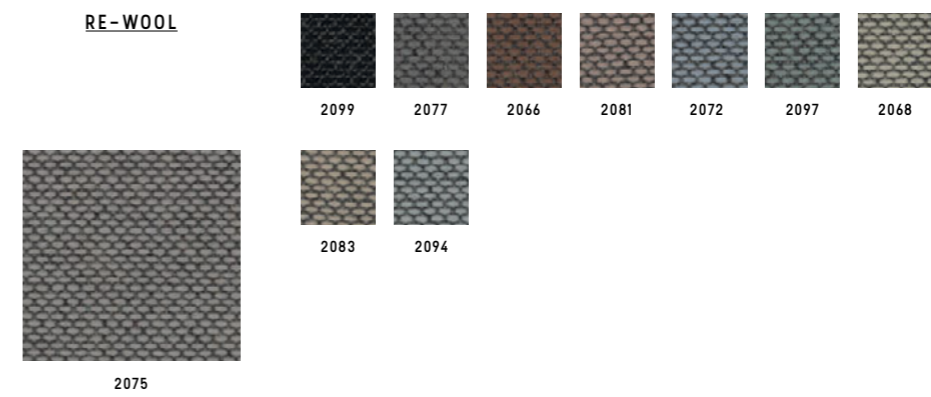
**OCEANIC**



Categoria/ Category **K**  
 Composizione/ Composition 100% post-consumer recycled polyester, including 50% SEAQUAL yarn



**RE-WOOL**

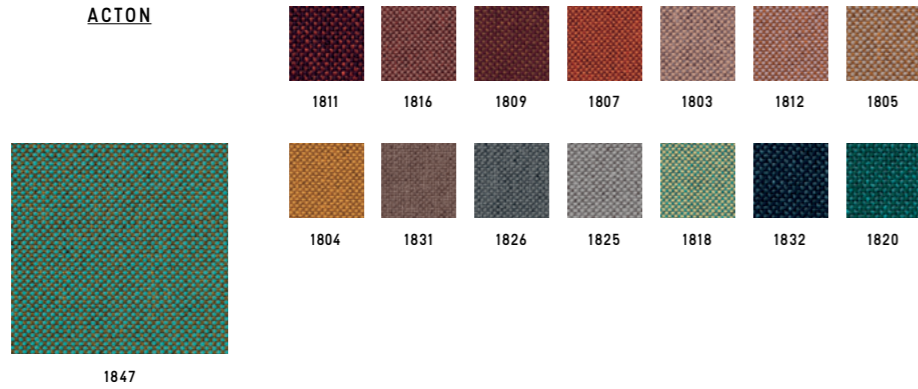


Categoria/ Category **K**  
 Composizione/ Composition 45% recycled wool + 45% new wool worsted + 10% nylon



**VESCOM**

**ACTON**



Categoria/ Category **D**  
 Composizione/ Composition 100% polyester



**LIMONTA**

**TRESIGALLO**



Categoria/ Category **K**  
 Composizione/ Composition 22% Acrylic + 22% wool + 22% polyester  
 13% cotton + 14% viscose + 17% wool



**G.S.**

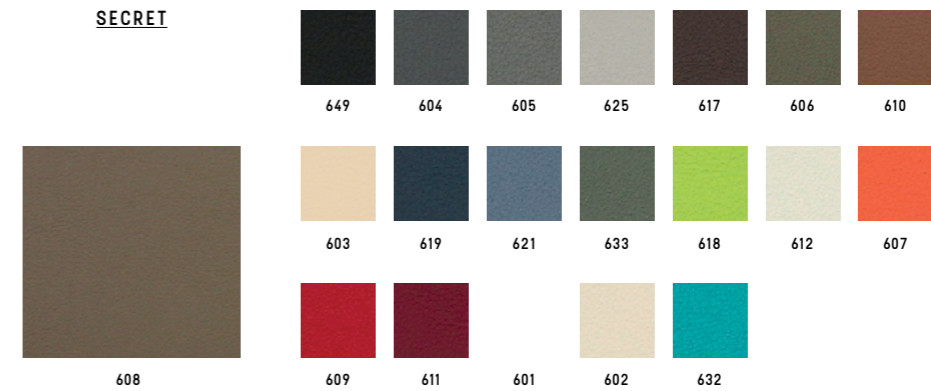
**SURROUND**



Categoria/ Category **B**  
 Composizione/ Composition 87,5% polyvinylchloride (PVC) + 12,5% cotton  
 Note/ Notes Antibacterial



**SECRET**



Categoria/ Category **C**  
 Composizione/ Composition 76% polyvinylchloride (PVC) + 2% polyurethane (PU) + 22% polysulfone (PES)



**GORGEUS**



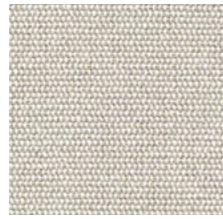
Categoria/ Category **D**  
 Composizione/ Composition 100% poliestere FR





**CHIOCCARELLO**

**DISCO COEX**



1402



Categoria/ Category  
Composizione/ Composition

D  
70% cotton + 20% acrylic + 5% viscose  
5% linen, 0% formaldehyde



**EXPO**



1379

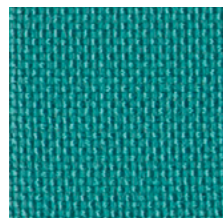


Categoria/ Category  
Composizione/ Composition  
Note/ Notes

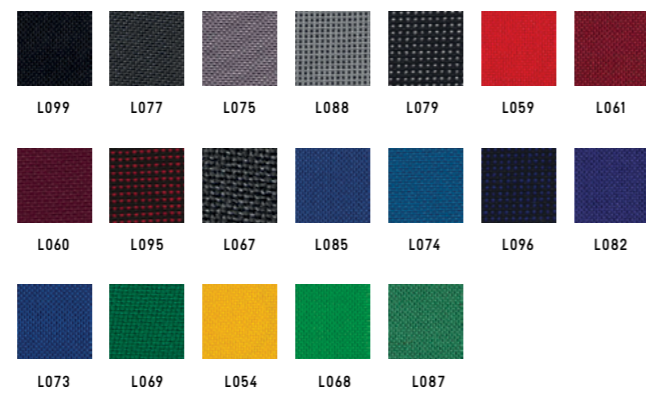
B  
100% propitex Fr bacteriostatic  
Bacteriostatic



**MADRID**



L097

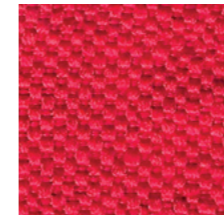


Categoria/ Category  
Composizione/ Composition

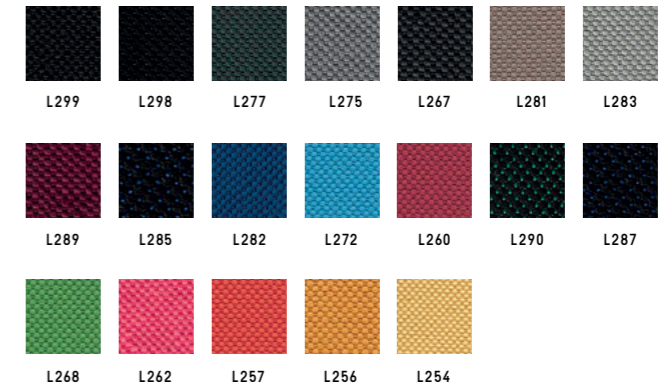
A  
100% polypropilene FR



**SALÒ**



L259



Categoria/ Category  
Composizione/ Composition

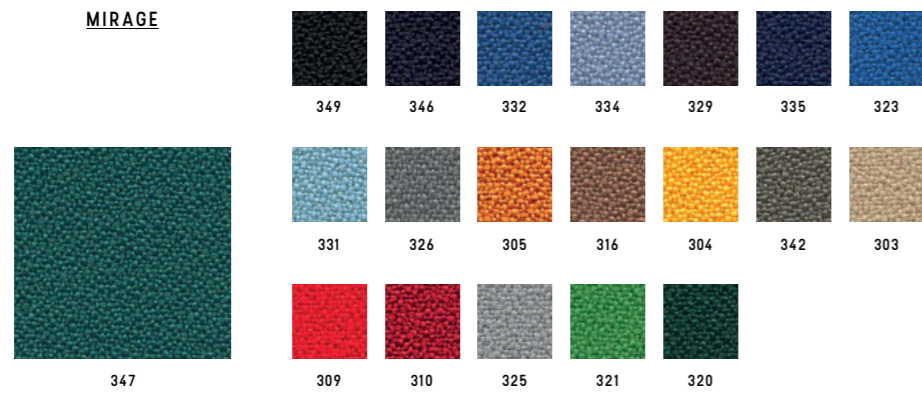
B  
100% polyester FR





**PUGI**

**MIRAGE**

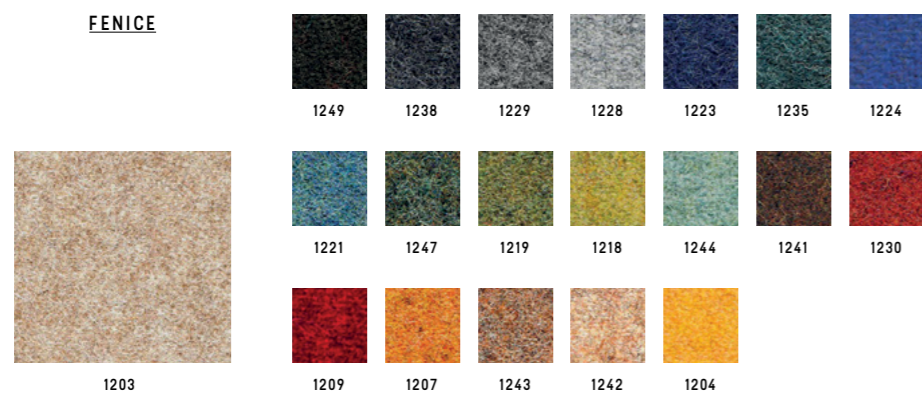


Categoria/ Category  
Composizione/ Composition

**B**  
100% polyester FR



**FENICE**



Categoria/ Category  
Composizione/ Composition

**C**  
75% wool + 25% polyamide



**BISENTIUM**



Categoria/ Category  
Composizione/ Composition

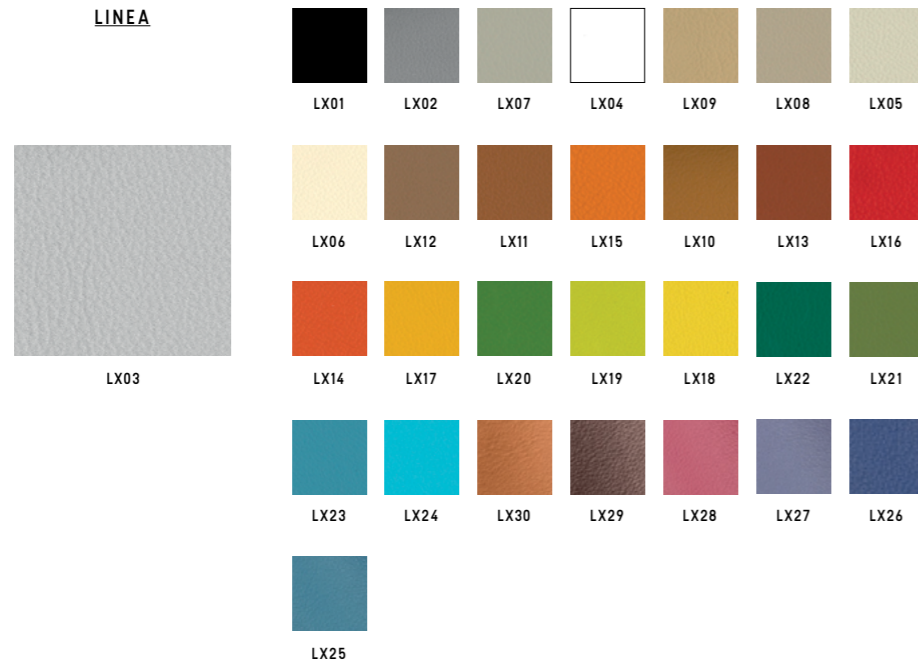
**K**  
30% wool + 28% polyester + 26% polyamide  
16% silk





**MASTROTTO**

**LINEA**

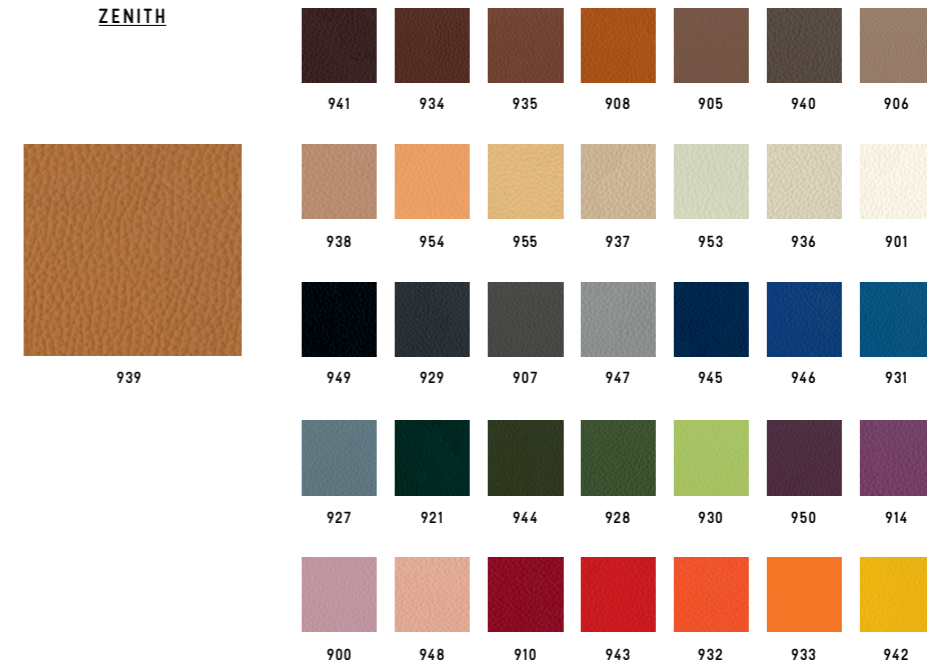


Categoria/ Category  
Composizione/ Composition

TOP (pieno fiore)  
Bovine leather



**ZENITH**



Categoria/ Category  
Composizione/ Composition

TP  
Bovine leather



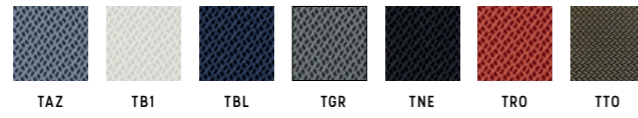




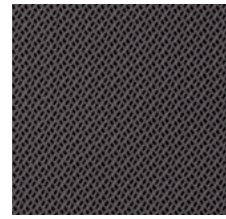


RETI TRIDIMENSIONALE

RHYTHM



TAZ TBI TBL TGR TNE TRO TTO



TAN

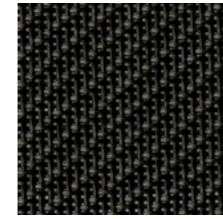


TVD

Categoria/ Category D  
 Composizione/ Composition 100% polyester



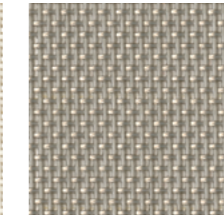
CATEGORIA L/  
 CATEGORY L



849



801



825

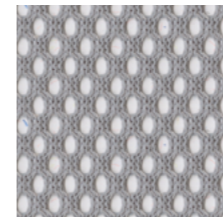
Categoria/ Category L  
 Composizione/ Composition 73% PVC + 27% poliestere/ 73% PVC + 27% polyester  
 849-801: Light, Nulite, Smartlight, Pop,  
 825: Light, Nulite



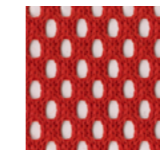
CATEGORIA R/  
 CATEGORY R



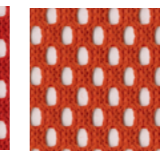
NE BI VD BL



GR



RO

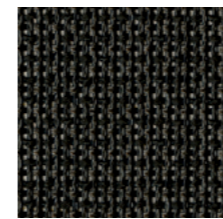


AR

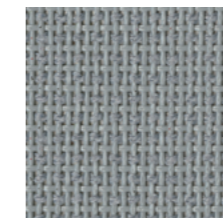
Categoria/ Category R  
 Composizione/ Composition 100% poliestere/ 100% polyester  
 Solo per Aire Jr, Post, Pop, Switch/  
 Only for Aire Jr, Post, Pop, Switch



CATEGORIA Z/  
 CATEGORY Z



NE



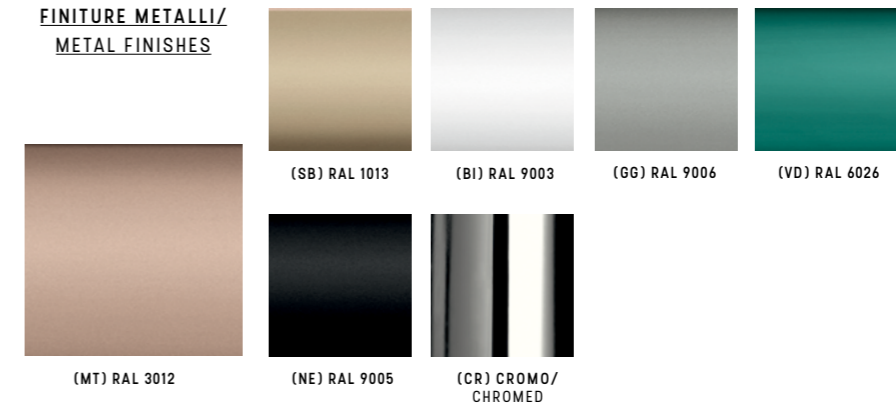
GR

Categoria/ Category Z  
 Composizione/ Composition 60% PVC + 40% poliestere/ 60% PVC + 40% polyester  
 Solo per Overtime Evo, Extralight/  
 Only for Overtime Evo, Extralight





**FINITURE METALLI/  
METAL FINISHES**



Categoria/ Category

FE

**PLASTICHE/  
PLASTICS**



Categoria/ Category

PE

**LEGNO/  
WOOD**



Faggio/ Beech

Rovere/ Oak

Noce/ Walnut

Wenge'

Standard

A progetto/ For customized projects

Categoria/ Category  
Composizione/ Composition

LE  
Legno massello di faggio in colore naturale/ Solid beech wood natural finish.  
Legno massello di rovere con verniciatura di tipo acrilico in vari colori/ Solid oak wood natural finishes.



